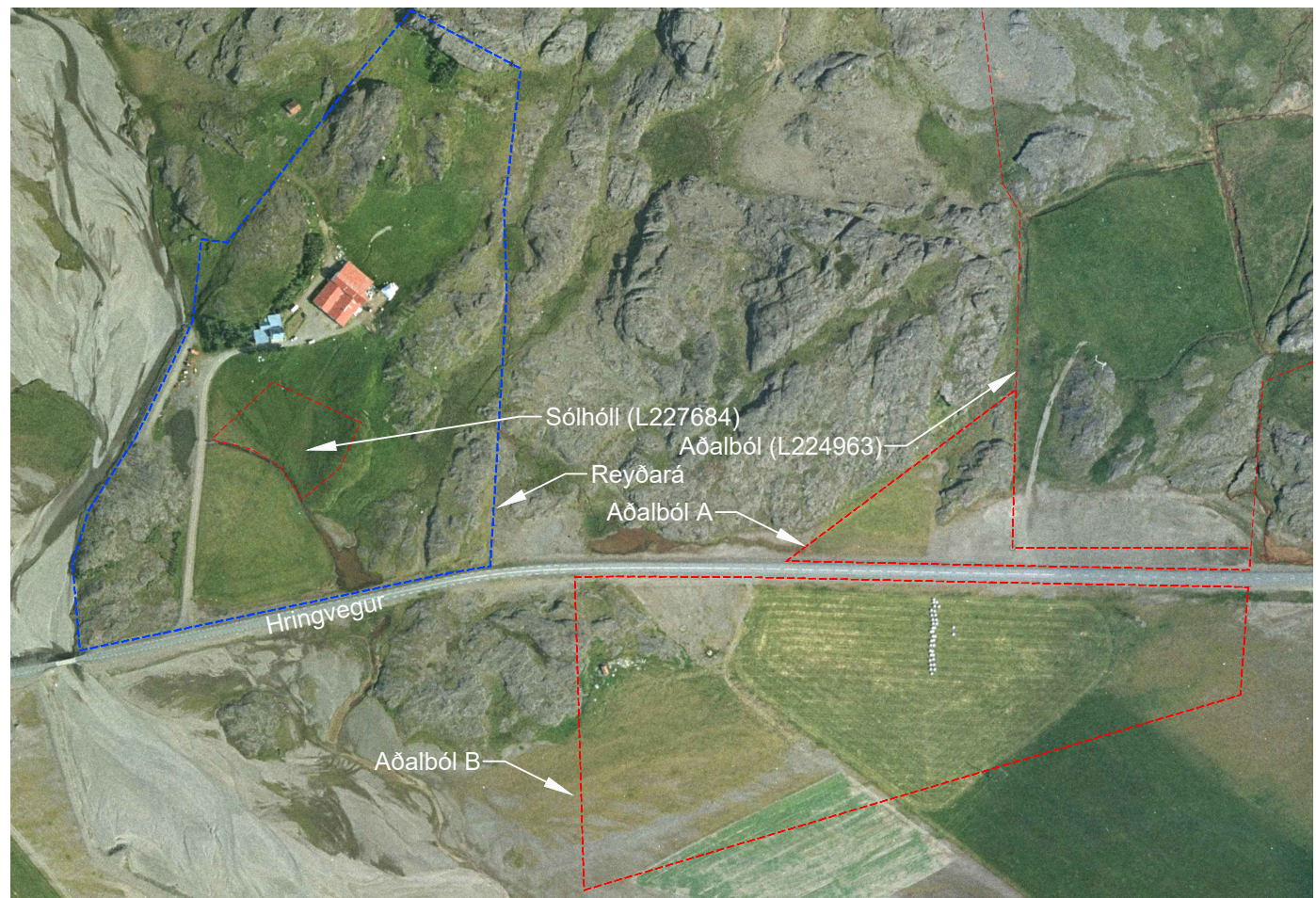




Reyðará				
Nr.	Austur X-hnit	Norður Y-hnit	Uppruni	
1	704568.140	441973.181	GPS	
2	704563.032	442034.443	GPS	
3	704574.304	442071.681	GPS	
4	704607.825	442123.663	GPS	
5	704647.361	442204.181	GPS	
6	704653.516	442262.089	GPS	
7	704671.651	442259.720	GPS	
8	704763.295	442377.890	GPS	
9	704800.709	442422.696	GPS	
10	704877.909	442381.881	GPS	
11	704866.129	442282.372	GPS	
12	704868.094	442224.704	GPS	
13	704856.473	442032.470	GPS	
14	704826.791	442027.473	GPS	
15	704749.809	442011.266	GPS	

BREYTINGAR			
DAGS.	NR.	BREYTINGAR	SAMP.



Afstöðumynd, 1:5.000

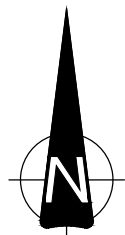


Fellsmúli 26 • 108 Reykjavík • Sími: 517 9050 • Netfang: verkhof@verkhof.is

Heiti verks: <b>Reyðará</b> Lón - Sveitarfélagið Hornafjörður		Hönnuðir: Svavar M. Sigurjónsson 180867-3419 Björgvin Ó. Sigurjónsson 110481-5279	Dags: 11.01.2023
Heiti teikningar: <b>Lóðablað:</b> Afstöðumynd og hnitaskrá		Samþykkt:	Geymslunr.: 101
Hannað: BÓS		Aðalhönnuður:	Verknúmer: 22-77
Teiknari: BÓS		Mælikv:	Mælikv: 1:2.000 / 1:5.000
Mælt: BÓS		Yfirfarið: SMS	Teikn.nr.: 102
			Útgáfa:

P:\Verk 2022\22-77 Reyðará\03 Teikningar\A-teikn\102 Reyðará - landskipti.dwg

Lóð, 1:2.000



1:2000 (í A3) m



1:5000 (í A3) m